

Norfolk and Waveney ICS Lower Limb Compression Formulary for Primary Care

April 2026

Document Control Sheet

This document can only be considered valid when viewed via the ICB's intranet. If this document is printed into hard copy or saved to another location, you must check that the version number on your copy matches that of the one online.

Approved documents are valid for use after their approval date and remain in force beyond any expiry of their review date until a new version is available.

Name of document	Norfolk and Waveney Lower Limb Compression Formulary
Version	1.1
Date of this version	April 2026
Produced by	Rachel Sweeney Skin Integrity Service Lead, Tissue Viability Specialist Nurse, Norfolk Community Health & Care NHS Trust Jayne Jode and Kate Drake, Tissue Viability Specialist Nurses, East Coast Community Healthcare Jane Parker, Clinical Nurse Specialist -Tissue Viability, Coastal PCN Fiona Marshall and Roisin Hawkes, Medicines Optimisation Team, Norfolk & Waveney ICB
What is it for?	A resource tool and formulary to support and guide primary care clinicians in the appropriate use and choice of compression hosiery and garments.
Evidence base	Review of Hosiery Garment and Sundries Formulary NCHC 2019
Who is it aimed at and which settings?	All healthcare professionals that prescribe or request prescriptions for patients that require Lymphoedema and Venous compression treatment for management of lower limbs within Norfolk and Waveney primary care settings
References:	NICE
Reviewed by:	NHS Norfolk & Waveney ICB Prescribing and Formulary Group (PFG); N&W Therapeutics Advisory Group (TAG)
Approved by:	NHS Norfolk & Waveney ICB Medicines Optimisation Programme Board
Date approved:	March 2026
Dissemination:	Publication on Knowledge NoW
Date disseminated:	30/3/2026
Review Date:	3 years – March 2029
Contact for Review:	ICB Medicines Optimisation Team

Version Control

Revision History	Summary of changes	Author(s)	Version Number
20/06/25	Initial draft – as discussed at May 2025 face to face meeting	RS/JP/JJ/KD/FM/RH	0.1
28/07/25	Draft 2 – as discussed at July 2025 face to face meeting	RS/JP/JJ/KD/FM/RH	0.2
24 - 31/10/25	Draft following MS teams meeting October 2025	RS/JP/JJ/KD/FM/RH	0.3
13/11/25	Draft updated following email comments and product info from manufacturers	RS/JP/JJ/KD/FM/RH	0.4
05/01/26	Draft updated following agreement by email regarding comparative product and pricing info – Toe caps / cotton-containing stockings	RS/JP/JJ/KD/FM/RH	0.5
30/3/2026	Document supported by TAG and ratified by Medicines Optimisation Programme Board – published on KNoW	As above	1.0 - final
13/4/2026	Links and images inserted to latest Early Intervention Lower Leg and Foot Pathway, and Leg Ulcer pathway published on KNoW	ICB Community commissioning	1.1 - final

Contents

Introduction.....	5
Scope and Purpose	5
Stakeholders	5
Product Inclusion.....	5
Resources	5
Compression Therapy	6
Types of hosiery available and Indications	6
British Standard Drug Tariff Classification elastic hosiery (BS 6612)	7
RAL Standard & European Standard Class hosiery.....	8
Comparison of British and European (RAL) standard classes of compression.....	9
Choice of Compression Products	10
Measuring And Selecting The Correct Size Of Hosiery	11
Made To Measure.....	11
Care of Hosiery And Guaranteed Wear Time.....	11
Factors That Can Affect The Expected Wear Time And Frequency Of Supply Of Garments.....	12
TREATMENT PATHWAY - Initial treatment - Immediate and necessary care	11
Product options for the Early Intervention Pathway	14
Leg Ulcer Treatment: Norfolk and Waveney Pathway (Community Providers)	15
Circular Knit: British standard - Suitable for patients without oedema	16
Circular Knit: European standard (RAL) - Venous patients with or without oedema.....	18
Flat Knit: European standard (RAL) – Made to measure	19
Venous Ulcer Compression Systems (Hosiery Kits)	20
Compression Socks – British Standard / European Standard (RAL).....	22
Compression (Velcro) Wrap Systems - Lower Limb for venous and lymphoedema patients	23
Compression Toe Caps / foot compression garments	26
Bandage Shoe.....	26
Hosiery Applicators.....	27

Introduction

Scope and Purpose

The choice of available compression hosiery is enormous and therefore difficult for clinicians to make the right garment choice for the patient. This often results in poor patient outcomes and wasted costs through the supply of ill-fitting garments.

Graduated compression hosiery is used to provide compression and support in conditions related to venous insufficiency or oedema.

This formulary has been developed as a resource tool, to support and guide all healthcare professionals that prescribe or request prescriptions for patients that require Lymphoedema and Venous compression treatment within Norfolk and Waveney primary care settings. This includes patients seen in GP practices, Care Homes and within their own homes. Best practice involves holistically assessing patients presenting with lower limb conditions and treating with compression if appropriate.

Stakeholders

This formulary has been prepared by the Norfolk and Waveney Medicines Optimisation Team, in consultation with Tissue Viability and Lymphoedema specialists and representation from primary care.

Product Inclusion

The products listed within this document have been selected for inclusion, following evaluation and review in collaboration with local specialist stakeholder professionals. The product list should be sufficient to cover the majority of Norfolk and Waveney patients' needs. In exceptional circumstances other products may be prescribed where formulary products are found to be inadequate or unsuitable. These can be provided after application to the appropriate specialist.

Resources

The most up to date version of this document is available on the Knowledge NoW website - <https://nwknowledgenow.nhs.uk/>

Compression Therapy

Compression therapy plays a key role in the prevention and management of skin changes caused by venous and lymphatic disease. It should be considered as 'first line treatment' to optimise wound healing and acute/chronic disease management. Early management with compression therapy should be used, including in patients assessed as being at risk of developing leg ulceration, for example with oedema, pain, or changes to lower limb.

Following a holistic assessment, if compression has been deemed as safe for use in the individual patient, best practice is for compression therapy to be commenced. Compression therapy options vary in the type of garment, degree of compression, fabric, stiffness, size, and length. These variances can lead to confusion and inconsistency when selecting and prescribing compression products. This formulary aims to provide information and guidance on the types of compression garments, assessing patients for this and how to select the appropriate garment for the patient.

Types of hosiery available and Indications

DO NOT OFFER COMPRESSION HOSIERY FOR THE FOLLOWING CIRCUMSTANCES:

- **To prevent post-thrombotic syndrome (PTS) or VTE recurrence after a proximal DVT.** Compression stockings may be used for the management of leg symptoms after DVT.¹
- **For the sole prevention of DVT for travellers** is not available on NHS prescription. Patients must be advised to purchase Class 1 below knee stockings or proprietary "flight socks".
- **Anti-embolism stocking (TED) stockings,** are often used in hospitals to minimise the risk of DVT in immobilised patients. These are not prescribable on FP10.
- **Tights:** currently not supported for prescribing on the NHS for venous compression. If patients choose, they can be purchased from pharmacies or directly from the manufacturer. They may be used by local NHS specialists for treatment of lymphoedema patients in individual cases.

¹ <https://cks.nice.org.uk/topics/deep-vein-thrombosis/management/management/>

British Standard Drug Tariff Classification elastic hosiery (BS 6612)

British standard garments are made from thin, light fabrics. which may make them more acceptable to some patients. They provide effective compression to heal venous leg ulcers and maintain healing. However, they are only suitable for patients with up to minimal oedema and no limb distortion.

British Standard Hosiery is available to prescribe on FP10. Three classes are available, with differing levels of compression at the ankle and differing indications for use.

Indications of British standard Hosiery:

British Standard circular knit - Class 1 stockings (compression at the ankle 14–17 mmHg) for:

- Superficial or early varicose veins
- Varicose veins during pregnancy
- Immediate and Necessary Care: see [Early intervention lower limb pathway](#)

British Standard Circular knit - Class 2 stockings (compression at the ankle 18–24 mmHg) for:

- Varicose veins of medium severity
- Treatment of, and prevention of the recurrence of, leg ulcers
- Varicose veins during pregnancy

British Standard Circular knit- Class 3 stockings (compression at the ankle 25–35 mmHg) for:

- Gross varicose veins
- Post-thrombotic venous insufficiency
- Treatment of, and prevention of the recurrence of, leg ulcers

Graduated compression hosiery is palliative rather than curative, and their use needs to continue for as long as there is evidence of venous disease.

European Standard (RAL) Class hosiery

If oedema is diagnosed, European Standard Class, also referred to as RAL Hosiery, can be used to prevent deterioration or reoccurrence once limb volume has been reduced. European Standard Class compression garments are more likely to encourage lymphatic movement and reabsorption of the lymph in the vessels, containing the oedema. This is due to the greater stiffness of the fabric used.

European Standard Class garments are available on FP10 for the treatment of chronic oedema / lymphoedema – these are also available in three classes of compression but the level of compression for each class of garment is higher than the equivalent British Standard. European Standard Class garments are manufactured with a higher static stiffness index to improve clinical outcomes.

Indications for European Standard Class (also referred to as RAL standard) Hosiery

European Standard Class - Class 1 stockings (compression at the ankle 18-21 mmHg) for:

- Primary or secondary lymphoedema/chronic oedema
- Tired heavy legs
- Tendency of swelling to ankles, feet or legs
- Superficial or early varicose veins with or without oedema
- Varicose veins during pregnancy
- Controlled cardiac oedema

European Standard Class - Class 2 stockings (compression at the ankle 23-32 mmHg) for:

- Primary or secondary lymphoedema/chronic oedema
- Chronic venous insufficiency
- prevention of the recurrence of leg ulcers
- Tired, heavy legs
- Varicose veins with or without oedema
- Following vein surgery
- Supports sclerosing therapy

European Standard Class - Class 3 stockings (compression at the ankle 34-46 mmHg) for:

- Primary or secondary lymphoedema/chronic oedema
- Chronic venous insufficiency
- Prevention of the recurrence of leg ulcers
- Varicose veins with or without oedema
- Following vein surgery
- Supports sclerosing therapy
- Lipodermatosclerosis
- Papillomatosis
- Severe hyperkeratosis

Choice of compression products

Type	Indication
Hosiery British Standard	Circular knit fabric which means it is more elastic. This garment is only suitable for patients without oedema and limb distortion Available as hosiery and socks
Hosiery European (RAL) Class	Flat knit fabric - the garment is stiff. This is suitable for patients with or without chronic oedema/ lymphoedema. Available as hosiery and socks
Leg Ulcer Hosiery Kits	Hosiery kits are available as either British standard or European class. Choice depends on the assessment of the patient's lower limb. Hosiery kits equate to 40mmHg. This is gold standard compression level for venous leg ulcer management.
Compression Wraps	Wraps are adjustable garments designed to provide graduated compression to manage oedema and improve circulation.
Compression Bandaging	Compression bandaging is suitable for patients who are assessed as having reducible oedema or patients with high exudate levels before commencing a garment. Bandages can be either elastic or inelastic. Please see Wound Care formulary for compression bandages - as per Norfolk & Waveney ICB Wound Care Formulary Companion and Guide
Compression Toe Caps	These can be used alone, with foot pieces and or leg pieces for patients with lymphoedema/chronic oedema
<p>Compression hosiery is available in below knee and thigh-length.</p> <p>Below Knee is suitable for most people if no oedema is present at/ or above the knee and is preferred because:</p> <ul style="list-style-type: none"> • It is better tolerated than thigh-length compression • They improve the action of the calf-muscle pump, thereby improving venous return from the leg. <p>Thigh-length stockings should be considered if there are severe varicose veins above the knee or swelling which extends above the knee.</p> <p>When prescribed for varicosities, the garment should reach the highest level of the varices and extend 5cm above it.</p> <p>Garments may have open or closed toes.</p> <p>Open toe stockings may be considered if the person:</p> <ul style="list-style-type: none"> • Has arthritic or clawed toes, or fungal infection • Prefers to wear a sock over the compression stocking 	

Measuring and selecting the correct size of hosiery

The effectiveness of the garment is dependent on the accuracy of limb measurements and the correct selection of garment based on those measurements. If stockings are to be worn on both legs, measure each leg. Measurements should ideally be taken first thing in the morning, or after a period of prolonged lower limb elevation.

Ensure that patients who need compression hosiery have their legs measured and that the correct size of stocking is provided.

Where measurements are significantly different to standard size documents, made-to-measure garments should be prescribed.

Made to Measure

In many cases measurements are likely to fall within the manufacturer's standard size garments. Made-to-measure garments are much more expensive than standard size and the need for these must be carefully assessed. More complex patients may need made to measure due to the presence of oedema rather than straight-forward venous ulceration.

Made-to-measure garments are available in all three recommended compression classes.

Patients who may need made to measure hosiery includes those with:

- Large feet
- Long shin length
- Wide malleoli measurement
- Grossly chronic oedematous legs
- Awkward shaped legs
- Concordance issues relating to having had ill-fitting hosiery in the past.

"Made to measure" should be stated on the prescription for those who require a custom-made product.

Care of hosiery and guarantee wear time

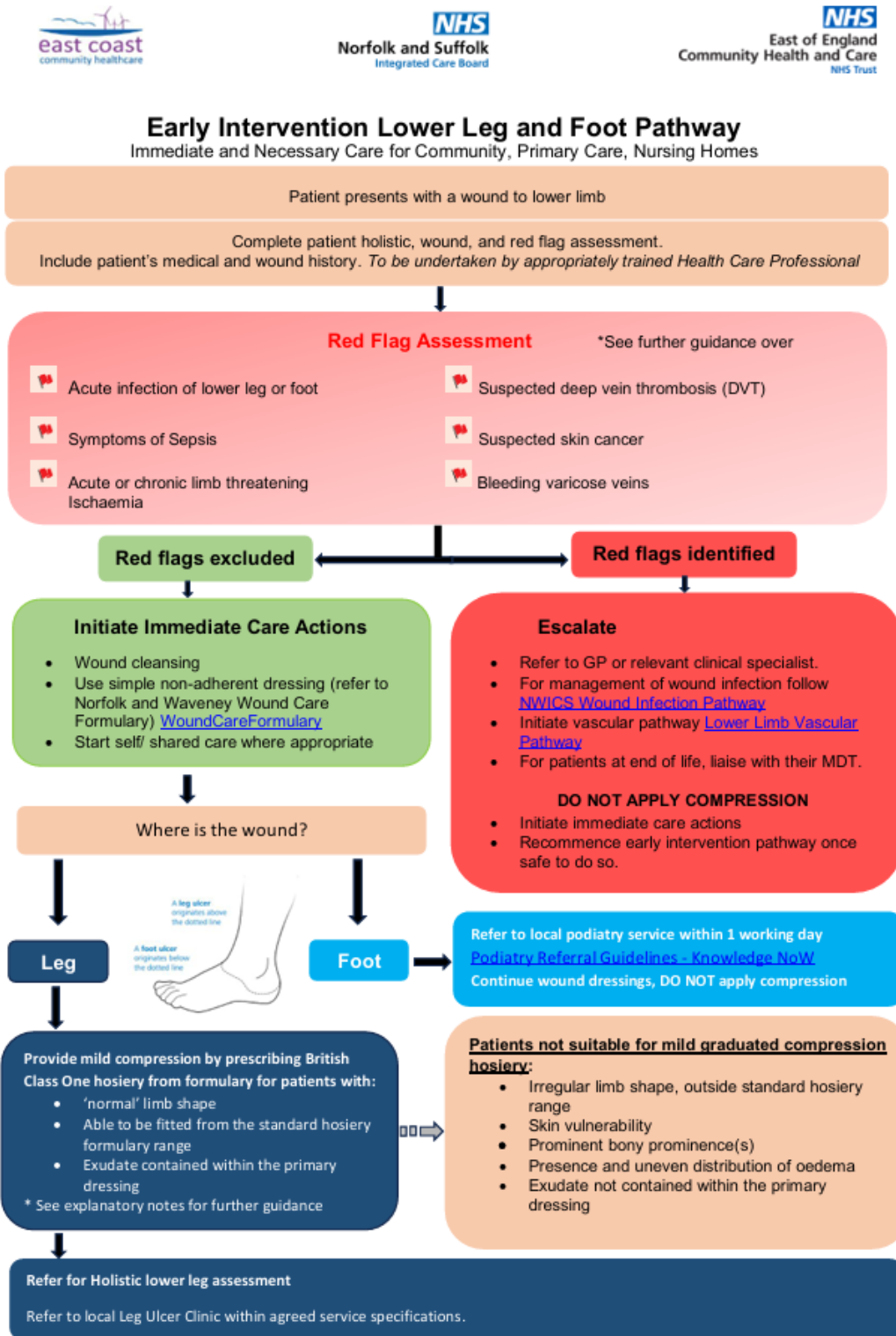
- If properly cared for, individual garments should last for at least three months and in the case of some products up to 6 months (see manufacturers' recommendations). Two garments (per limb) should therefore last around 6 to 12 months.
- It is recommended that review should take place every 6 months (with repeat Doppler ultrasound if there are any changes to patients' medical health or to their lower limb).
- It is recommended items do not go on repeat prescription.
- Detailed instructions on application must be given with garments. In cases where patients have genuine difficulty in application, application aids are available on prescription.

Factors that can affect the expected wear time and frequency of supply of garments

1. Limbs may reduce in size dramatically, causing garments to slip and have a tourniquet effect further down the limb. Re-measurement for a smaller garment is then required.
2. Patient intolerance may require garment to be changed.
3. Ill-fitting made-to-measure garments may need to be returned to manufacturer and replaced with correct garment, at extra cost – accurate limb measurement using the appropriate tool and timely ordering and delivery will ensure best fit the first time.
4. Significant changes in the patient's condition e.g. in lymphoedema. The limb(s) will require re-measuring and a change of garment.
5. Very active patients who are motivated to wear their garments sometimes request products to be replaced more frequently if they are wearing them during exercise, as the garments may lose their elasticity sooner.

Treatment Pathway: Initial treatment - Immediate and necessary care

Norfolk and Waveney Early Intervention Lower Leg Pathway

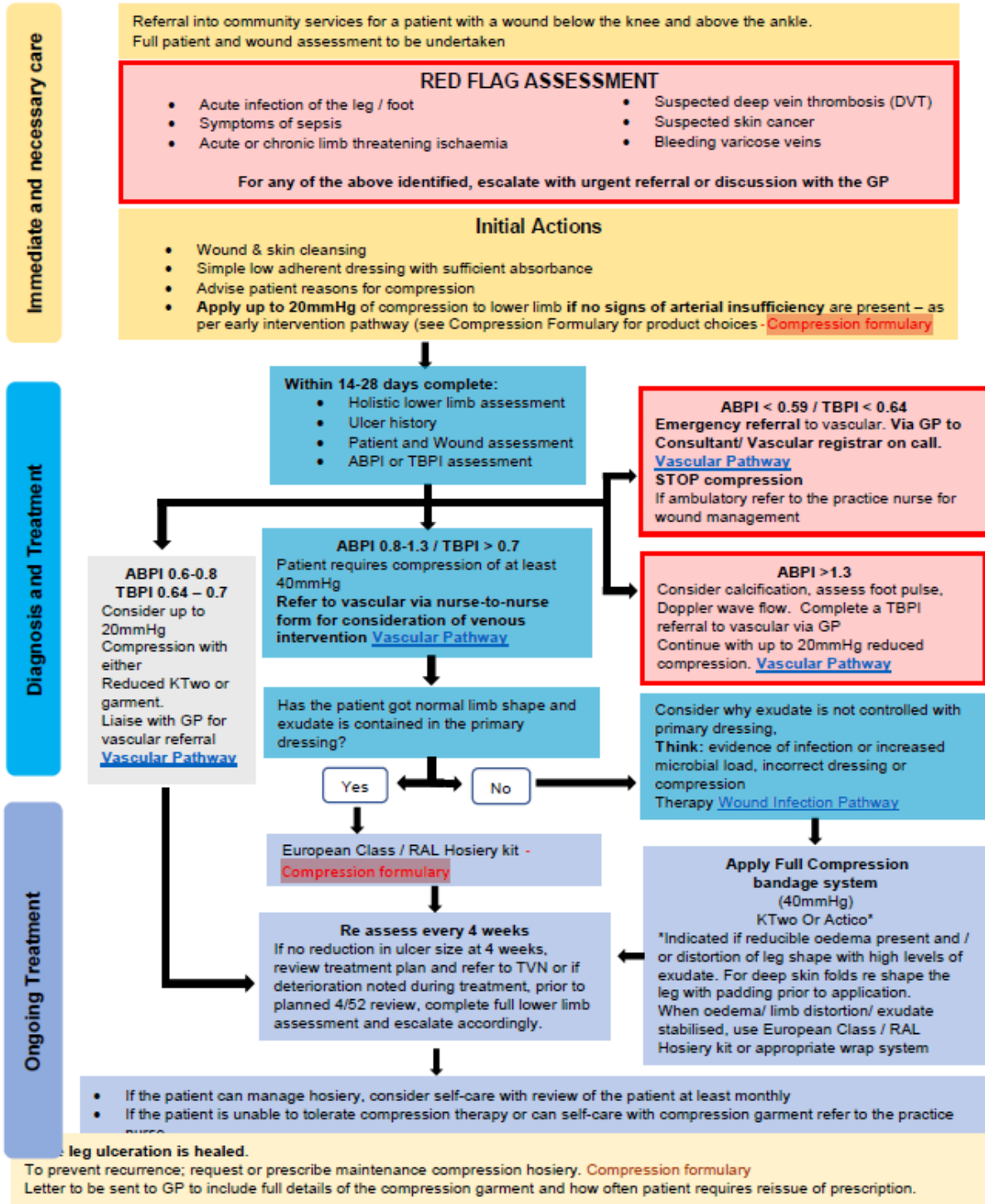


Product options for the Early Intervention Pathway

Clinical Presentation	Product / Compression type	Sizes	Indications for use	Additional information
Good limb shape / minimal exudate	Activa British Class 1 hosiery (14-17mmHg) Supplied as a pair	S M L XL	Treatment of venous or mixed leg ulcers where mild compression is recommended.	Issue one pair per affected limb, every 6 months (one to wear/ one to wash) Can be hand or machine washed up to 40°C; guaranteed for 100 washes See Activa British Standard / Care for your compression
	Duomed Soft British Class 1 hosiery (14-17mmHg) Supplied as a pair	S M L XL XXL		Issue one pair per affected limb, every 6 months (one to wear/ one to wash); machine washable Open Toe comes with application aid Thigh High has silicone top band duomed® soft graduated compression elastic hosiery
	Mediven Ulcer Kit - Compression liner pack RAL Standard: 20mmHg per liner Supplied as a pair of white closed toe liners Also called “Mediven Ulcer”	7 sizes Standard length		Guarantee: 6 months’ daily use Issue one pair per affected limb, every 12 months (one to wear/ one to wash); machine washable Product life / Care instructions: Link mediven ulcer kit® – the ulcer stocking system medi
Good limb shape / mild to moderate oedema / varying levels of exudate	Urgo KTWO Reduced* Multi component compression bandage system	18-25cm 25-32cm		* For use by Community Providers only

Norfolk and Waveney Integrated Care Board – Leg Ulcer Pathway (Community Providers) - [Leg-Ulcer-Pathway.pdf](#)

Norfolk and Waveney Integrated Care Board – Leg Ulcer Pathway (Community Providers)



NWICB Community Lower Limb Pathway

February 2026

V14

Circular Knit: British standard - Suitable for patients without oedema					
Manufacturer / Product	Compression Class	Lengths / Toe options	Colours	Sizes	Additional information / recommended quantity and frequency of issue
L&R Activa Latex free	Class 1 14-17mmHg Class 2 18-24mmHg Class 3 25-35mmHg	Below Knee and Thigh length Open and closed toe options	Black Sand Honey	Small Medium Large X Large XX Large	Supplied as a pair Issue one pair per affected limb, every 6 months (one to wear/ one to wash) Machine washable up to 40°C; guaranteed for 100 washes Product info & Measuring Guides: Activa British Standard
Medi UK Duomed Soft Latex free	Class 1 14-17mmHg Class 2 18-24mmHg Class 3 25-35mmHg	Below Knee and Thigh length Open toe available in Classes 1, 2 & 3 Closed toe available in Classes 1 & 2	Black Sand	Small Medium Large X large XX Large Form	Supplied as a pair Issue one pair per affected limb, every 6 months (one to wear/ one to wash) machine washable Open Toe option comes with application aid Thigh high has silicone top band duomed® soft graduated compression elastic hosiery
Special Indication Garment – restricted use for those with difficulty using standard hosiery & use of application aid not viable					
Medi UK Duomed Soft 2 easy	Class 1 14-17mmHg Class 2 18-24mmHg	Below Knee 2-part garment <i>(Anklet and Below Knee parts are ordered and priced separately in the Drug Tariff).</i>	Black Sand	Small Medium Large X Large XX Large	Each garment part (Anklet and Below Knee sections) is supplied as a pair Issue one pair of each required part per affected limb, every 6 months (one to wear/ one to wash) For patients who cannot manage a standard stocking, even when using an application aid.
Duomed Soft Measuring and fitting video: Link			Measuring Form: 2024_EFORM_FP10_duomed_soft_2easy_form.pdf		

Circular Knit: European standard (RAL) - Venous patients with or without oedema					
Manufacturer / Product	Compression Class	Lengths / Toe options	Colours	Sizes	Additional information / recommended quantity and frequency of issue
L&R Actilymph Latex free	Class 1 18-21mmHg Class 2 23-32mmHg Class 3 34-46mmHg	Below knee Closed toe (Class 1 & 2) Below knee Open toe (Class 1,2 & 3) Thigh length Closed toe (Class 1 & 2) Thigh length Open toe (Class 1,2 & 3)	Black Sand	Small Medium Large X Large XX Large	Supplied as a pair Issue one pair per affected limb, every 12 months (one to wear/ one to wash) Care and product life instructions: Care for your compression
Actilymph Product info & Measuring Guides: https://lohmann-rauscher.co.uk/products/compression-hosiery/actilymph					
Medi UK Ltd Mediven Plus Latex free	Class 1 18-21mmHg Class 2 23-32mmHg Class 3 34-46mmHg	Below Knee and Thigh length Open toe and closed toe options Length: Standard or petite Circumference: Standard or Extra wide	Black Beige	X Small (1) Small (2) Medium (3) Large (4) X large (5) XX large (6) XXX large (7)	Supplied as a pair Issue one pair per affected limb, every 12 months (one to wear/ one to wash) Can be hand or machine (delicates) washed up to 40°C. No fabric conditioner. Care and product life instructions: Link 5cm broad band top
Mediven Plus How to measure video: medi UK how to measure for mediven® off the shelf round knit below knee			Measuring Form: 78028-medi-measuring-chart-hospital-FP10-GP10.pdf		

Circular Knit: European standard (RAL) - Venous patients with or without oedema

Special Indication Garment – For venous and lymphoedema patients with sensitive skin who need to regulate temperature

Manufacturer / Product	Compression Class	Lengths / Toe options	Colours	Sizes	Additional information / recommended quantity and frequency of issue
<p>Juzo Juzo Dynamic Cotton</p> <p>Latex free</p>	<p>Class 1 18-21mmHg Class 2 23-32mmHg</p>	<p>Below Knee - Open & Closed Toe Without or with silicone border</p>	<p>Pepper Almond</p>	<p>I, II, III, IV, V, VI Lengths: Extra Short, Short, Standard</p>	<p>Supplied as a pair Issue one pair per affected limb, every 12 months (one to wear/ one to wash) 40% cotton content (100% cotton in contact with skin) Product info: Juzo Dynamic - Juzo / Juzo Dynamic Cotton (Lower Limb) Wound Care Handbook</p>
<p>How to measure videos: Virtual Inservice Juzo Academy</p>			<p>Measuring Form via: https://www.juzo.com/en-uk/products/compression-garments/compression-therapy/lower-limb/juzo-dynamic</p>		

Flat Knit: European standard (RAL) – Made to Measure (for patients whose measurements do not fit <i>Off-the-Shelf</i> garments)					
Manufacturer / Product	Compression Class	Lengths / Toe options	Colours	Sizes	Additional information / recommended quantity and frequency of issue
Medi UK Ltd Mediven Cosy Higher static stiffness fabric for Lymphoedema/ Chronic Oedema, stage 3-4. Suitable for sensitive / Diabetic feet.	Class 1 18-21mmHg Class 2 23-32mmHg	Below knee and Thigh Length Open and closed toe options mv mundi & mv cosy Made to Measure - Tips For Ordering EFORM_FP10_mediven_mondi_cosy_m2m_Form_0725.pdf	A range of colours and patterns	Custom made	Supplied and priced as single garments Extras available (Additional cost): <ul style="list-style-type: none"> • Closed toe • Silicone top band • Y knitting mark • Zip Issue two garments per affected limb, every 12 months (one to wear/ one to wash)
Juzo UK Ltd Juzo Expert – Custom made for the lower limb	Class 1 18-21mmHg Class 2 23-32mmHg Class 3 34-46mmHg	Below knee and Thigh Length* Closed toe – additional extra	Standard colour is “Almond”. At <i>added cost</i> per piece, other colours are available, only if needed to suit skin colour.	Custom made	Supplied and priced as single garments Issue two garments per affected limb, every 12 months (one to wear/ one to wash) Extras available (Additional cost): Below knee: Closed Toe; Non-standard colour if needed Thigh Length: Closed Toe; Non-standard colour if needed; Silicone border Juzo Expert Knee-High Order Form Juzo Expert Thigh High Order Form

VENOUS ULCER COMPRESSION SYSTEMS (Hosiery Kits)

Uses:

- First line for ulcer treatment, if exudate is contained within dressing and patient has the appropriate leg shape.
- To enable self-care, helping patients to apply compression independently.
- To layer hosiery and achieve higher levels of compression. They are a two-layer compression hosiery kit and come in British standard and European class options. First liner (either 10 or 20mmHg) and second liner (either 30 or 20mmHg) to equal 40mmHg when used together.

Product life / quantities to be supplied:

All patients should be given written/verbal information and advice on care of the hosiery and application technique.

Hosiery Kits – for patients with or without oedema					
Manufacturer / Product	Compression level	Lengths / Toe options	Colours	Sizes	Addition information / recommended quantity and frequency of issue n
L&R Actilymph Hosiery kit Latex free	Kit contains: 1 x Stocking and 2 x liners <ul style="list-style-type: none"> • Outer stocking 30mmHg • Liner – 10mmHg Leg Ulcer Hosiery Kits	Below Knee Closed toe Liner (White) Open toe outer stocking	Black Sand	Medium Large X Large XX Large	A kit is required for each affected leg Annual Quantity: 2 Kits for each affected leg per year (3 x 10mmHg closed toe liners can be ordered separately – see below)
L&R Activa Leg Ulcer Hosiery kit – Liner pack	Liner Pack contains: 3 x 10mmHg Liners	Open toe – Sand only Closed toe – All colours	White Black Sand	Small Medium Large X Large XX Large	May be used to replace / add to kit liners where outer stocking is still viable

<p>Medi UK Ltd Mediven Ulcer Kit Latex free</p>	<p>Kit contains: 1 x Stocking and 1 x Liner</p> <ul style="list-style-type: none"> • Outer stocking 20mmHg • Liner 20mmHg 	<p>Below Knee</p> <p>Lengths: Petite or Standard</p> <ul style="list-style-type: none"> • Closed toe Liner • Open toe outer stocking 	<p>Liner: White</p> <p>Outer stocking: Beige</p>	<p>X Small (1) Small (2) Medium (3) Large (4) X large (5) XX large (6) XXX large (7)</p>	<p>A separate kit is required for each affected leg</p> <p>Annual Quantity: 2 Kits for each affected leg per year</p> <p>(2 x 20mmHg closed toe liners can be ordered separately – see below)</p> <p>mediven ulcer kit® – the ulcer stocking system medi</p>
<p>Medi UK Ltd Mediven Ulcer Kit compression liner pack NB: each Liner provides 20mmHg compression</p>	<p>Liner Pack contains: 2 x RAL standard 20mmHg (1 pair)</p>	<p>Below Knee Closed Toe Liner</p>	<p>White</p>	<p>X Small (1) Small (2) Medium (3) Large (4) X large (5) XX large (6) XXX large (7)</p>	<p>May be used to replace / add to kit liners where outer stocking is still viable, or separately if mid-range compression is need as part of the Early Intervention Pathway (see earlier)</p> <p>Guarantee: 6 months' daily use Issue one pair per affected limb, every 12 months (one to wear/ one to wash); machine washable</p> <p>Product life / Care instructions: Link mediven ulcer kit® – the ulcer stocking system medi</p>

Compression Socks – British Standard / European Standard (RAL)					
Manufacturer / Product	Compression Class	Lengths / Toe options	Colours	Sizes	Addition information / recommended quantity and frequency of issue
L&R Activa Ribbed Sock	British: Class 1 14-17mmHg Class 2 18-24mmHg	Below Knee / Closed toe	Black (Class 1 & 2) Brown (Class 2)	S M L XL	Supplied as a pair Issue one pair per affected limb every 6 months Machine wash up to 40°C. Guaranteed for 100 washes Activa British Standard
Medi UK Ltd Mediven Active	European (RAL): Class 1 18-21mmHg Class 2 23-32mmHg	Below Knee / Closed toe Lengths: Regular or petite	Grey Navy Black Brown White	X Small (1) Small (2) Medium (3) Large (4) X large (5) XX large (6) XXX large (7)	Suitable for shoe sizes Eur 38-48 Supplied as a pair Issue one pair per affected limb over 12 months Hand wash or Machine wash, delicates cycle, up to 40°C; no fabric conditioner - Instructions for use mediven® active compression sock medi

COMPRESSION WRAP SYSTEMS

[NICE](#) has advised that the price variation for compression wraps over other compression products is *not justified* unless a compression wrap is the only suitable option. Only if both compression bandages and hosiery (with a doffing/donning aid) are unsuitable may compression wraps be offered in individual cases.

Compression (VELCRO) Wrap Systems, Lower Limb: for venous and lymphoedema patients who cannot use compression hosiery					
Manufacturer / Product	Properties	Limb sections (pieces are priced & supplied separately)	Colours	Sizes / Lengths	Addition information / recommended quantity and frequency of issue
Juzo Adjustable Compression System Light	Short stretch composition Offers up to 40mmHg compression	Foot (Normal; Long) Calf – Left or Right (Normal; Long) Knee Thigh – Left or Right (Normal; Long)	Black Beige	XS S M L XL	With normal daily wear and care, Juzo recommend replacing garments every six months / wash at least once a week, and more often as required. Issue 2 pieces per affected limb over 12 months Machine washable at 30°C using a laundry detergent for delicate fabrics Juzo ACS Measuring Information
Juzo Adjustable Compression System Light (Non-Compression) Liner (Pair)	Non-Compression liner Juzo Liner - Juzo	Below Knee Thigh High	Black	1, 2	With normal daily wear and care, Juzo recommend replacing garments every six months; wash at least once a week, and more often as required. Issue 1 pair per affected limb over 12 months Machine washable at 30°C using a laundry detergent for delicate fabrics Juzo ACS Measuring Information

<p>Juzo Juzo Liner Dual Stretch (Pair)</p>	<p>20-30mmHg compression in foot and ankle</p> <p>Option for oedema in the foot</p>	<p>Below Knee</p> <p>Toe style/lengths:</p> <p>Open Toe: Short; Regular</p> <p>Closed Toe: Regular</p>	<p>Beige</p> <p>Black</p> <p>Black pepper</p>	<p>Sizes</p> <p>I, II, III, IV, V</p> <p>Lengths:</p> <p>Short (Open toe only)</p> <p>Regular (Open toe & Closed Toe)</p>	<p>With normal daily wear and care, Juzo recommend replacing garments every six months; wash at least once a week, and more often as required.</p> <p>Issue 1 pair per affected limb over 12 months</p> <p>Machine washable at 30°C using a laundry detergent for delicate fabrics</p> <p>Juzo ACS Measuring Information</p>
<p>L&R ReadyWrap</p> <p>ReadyWrap</p> <p>Short stretch properties, for venous disease, lymphedema and chronic oedema.</p>	<p>Offers Full compression (40mmHg)</p>	<p>Toe</p> <p>Foot CT - Left or Right (Regular / Long)</p> <p>Calf (30cm; 35cm)</p> <p>Knee</p> <p>Thigh (25cm; 30cm)</p> <p><i>Leg and Foot pieces are supplied with a liner</i></p>	<p>Black</p> <p>Beige</p>	<p>S</p> <p>M</p> <p>L</p> <p>XL</p> <p>XXL</p>	<p>ReadyWrap pieces can be washed and re-used over a period of six months</p> <p>Issue 2 pieces per affected limb over 12 months</p> <p>Not suitable for: ankle circumference <18cm <i>unless</i> padding used to pad above 18cm circumference.</p> <p>ReadyWrap-BELOW-KNEE-Measurement-Form</p> <p>Readywrap-FULL-LEG-Measurement-Form</p>
<p>L&R ReadyWrap</p> <p>(Non-Compression) Liners (Pair)</p>	<p>Non-Compression</p>	<p>Below Knee</p> <p>Thigh High</p> <p>Info via: ReadyWrap</p>		<p>S/M/L ; XL/XXL</p> <p>S/M/L ; XL/XXL</p>	<p>Provide 1 pair of liners per affected limb every 6 months</p> <p>NB: ReadyWrap leg pieces are supplied with one complimentary liner.</p>


Continued next page




Compression (VELCRO) Wrap Systems, Lower Limb: for venous and lymphoedema patients who *cannot* use compression hosiery (continued)

Special Indication – for patients with sensitive skin and who require a lower profile product

Manufacturer / Product	Properties	Limb sections	Colour	Sizes	Addition information / recommended quantity and frequency of issue
Sigvaris Coolflex Standard Calf	Inelastic compression system Provides gradient compression of 20-50mmHg	Calf (specify Right or Left) Lengths: Regular Tall	Black	Small Small Max Medium/Large Medium/Large Max Extra Large/XX Large	Pack contains: 1 x Coolflex legpiece and 2 x Basic liners Built-in application sleeve Light weight mesh material, suitable for broken or sensitive skin and keeping the skin cooler Legpiece should last for 12 months when product use and care instructions are followed Sigvaris COOLFLEX Standard Calf - SIGVARIS GROUP Britain Sigvaris.com
Sigvaris Transition Liner	10-15mmHg compression in foot and ankle Option for oedema in the foot	Knee High	Beige Black	S, M, L, XL, XXL	Sigvaris Transition Liners have a 6-month compression life Pack size: 1 pair Provide 1 pair of liners per affected limb every 12 months https://www.sigvaris.com/en-gb/catalogue/conditions/lipoedema/transition-liner-accessories

COMPRESSION Toe Caps / foot compression garments					
Manufacturer / Product	Compression class	Product (ordered and priced per piece)	Colours	Sizes	Addition information / recommended quantity and frequency of issue
Essity Jobst Farrow Toe Cap	Class 1: 18-21mmHg Class 2: 23-32mmHg	Toe Cap: Toe cap fits left or right foot	Tan Black	XS, S, M, L	6-month compression life Provide 2 toe caps per affected foot per year Compressive toes can be trimmed Product info / Care instructions: JOBST Farrow Toe Cap JOBST

BANDAGE SHOE			
Manufacturer / Product	Product	Sizes (UK)	Product Information
Talarmade Footshield II	Order as Left or Right Foot	Small (3.5-5) Medium (5.5-7) Large (7.5-9) Extra Large (9.5-11)	https://talarmade.com/product/footshield-ii/ 

HOSIERY APPLICATORS (in order of increasing price)			
Product name	Company	Sizes	Product Information
Easy-Slide	Arion (Credenhill Ltd)	S M L XL	 <p>Donning aid Suitable for below knee open toe stockings https://arion-group.com/arion-products/arion-easy-slide/</p>
Magnide	Arion	Medium Large XLarge	 <p>Donning aid Suitable for closed toe, open toe and below knee stockings https://arion-group.com/arion-products/arion-magnide/</p>
Acti-Glide	L&R	One-size 2 devices can be clipped together for larger limbs	 <p>Donning aid Suitable for closed toe, open toe and below knee or thigh length hosiery https://lohmann-rauscher.co.uk/products/accessories/actiglide</p>

Continued next page

<p>Ezy-As</p>	<p>Moore (UK) Ltd</p>	<p>XS (<28cm) S (28-35cm) M (32-40cm) L (30-47cm) XL (>45cm)</p>		<p>Donning and doffing aid. Suitable for closed toe, open toe and below knee or thigh length hosiery https://www.ezyasabc.co.uk/</p>
<p>Sigvaris Melany</p>	<p>Sigvaris</p>	<p>XS S M L L Plus</p>		<p>Donning and doffing aid. Suitable for closed toe, open toe and below knee or thigh length hosiery https://www.sigvaris.com/en-gb/catalogue/product-styles/accessories/melany-donning-aids</p>