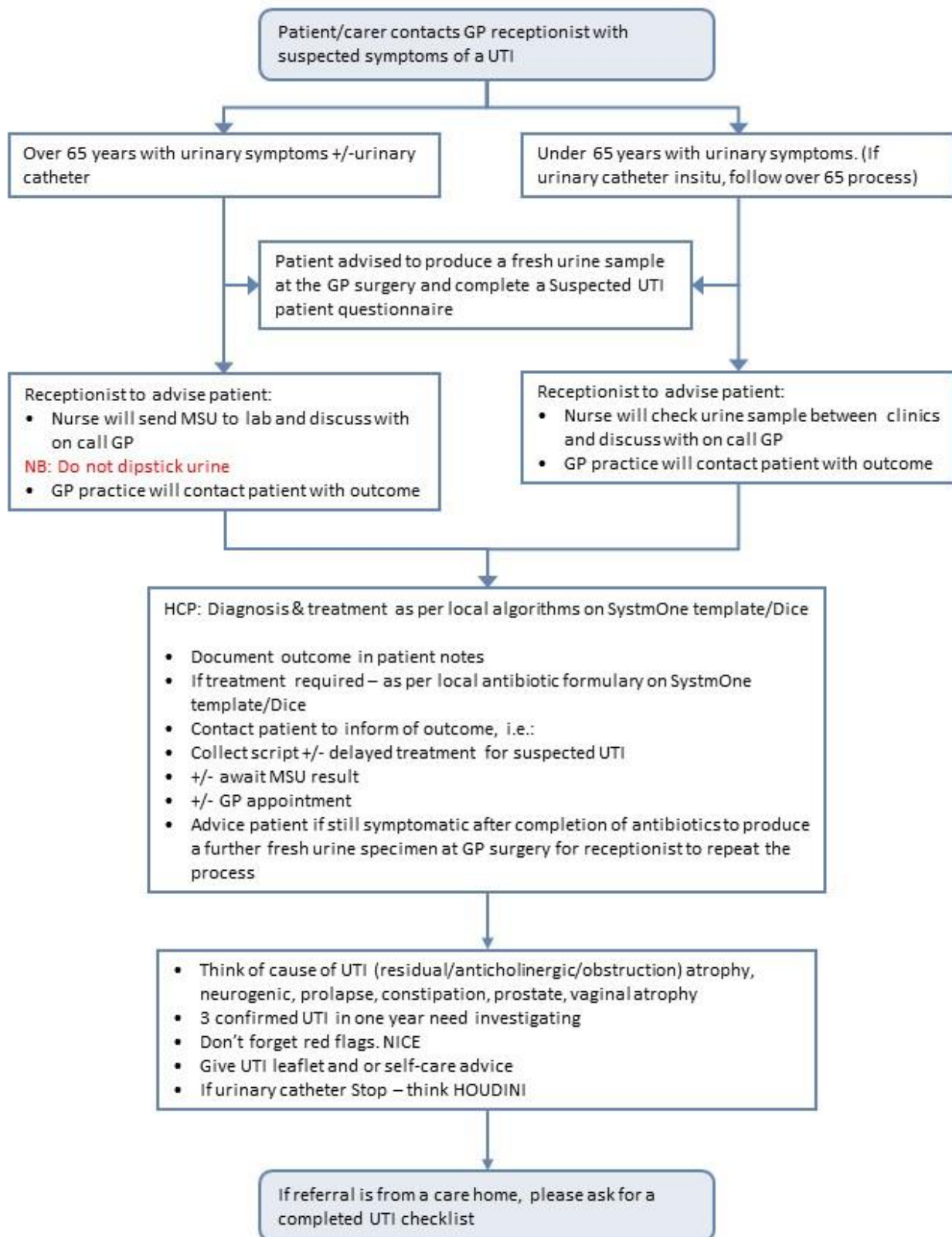


GP Practice internal process for suspected urinary tract infection (UTI)



Links to national and local guidance

UTI diagnosis in adults: Guide for General Practice:

<https://www.gov.uk/government/publications/urinary-tract-infection-diagnosis>

UTI prevention and awareness toolkit

https://elearning.rcgp.org.uk/pluginfile.php/172235/mod_book/chapter/803/UKHSA-NHSE%20UTI%20prevention%20and%20awareness%20toolkit%202023_final.pdf

Local prescribing, link to Norfolk and Waveney primary care formulary:

<https://www.norfolkandwaveneyformulary.nhs.uk/chaptersSubDetails.asp?FormularySectionID=5&SubSectionRef=05.01.13&SubSectionID=A100>

https://nwknowledgenow.nhs.uk/wp-content/uploads/2024/06/AntimicrobialGuidance_PPMO_Infections_01032025.pdf

NICE How should I assess a woman with suspected UTI? Red Flags:

<https://cks.nice.org.uk/topics/urinary-tract-infection-lower-women/diagnosis/assessment/#:~:text=Red%20flags%20such%20as%20haematuria,serious%20illness%20such%20as%20sepsis.>

New awareness campaign to help reduce hospital admissions for urinary tract infections

<https://www.england.nhs.uk/2023/10/new-awareness-campaign-to-help-reduce-hospital-admissions-for-urinary-tract-infections/>

Link to Eastern Pathology Alliance (EPA):

www.easternpathologyalliance.nhs.uk

EPA instructions for collection of microbiology specimens by patients –mid-stream urine (MSU):

<https://www.easternpathologyalliance.nhs.uk/wp-content/uploads/EWM-D-004-Info-for-patient-collected-specimens-MSU.pdf>

NHS England Urinary catheter tools including HOUNDINI

<https://www.england.nhs.uk/patient-safety/urinary-catheter-tools/>

RCGP Target Urinary tract infection resource suite

<https://elearning.rcgp.org.uk/mod/book/view.php?id=12652>

Improving Device-Related Infection Prevention Practice (DRIPP)

<https://dripp.org.uk/Resources/>